

Environmental Full Pallet

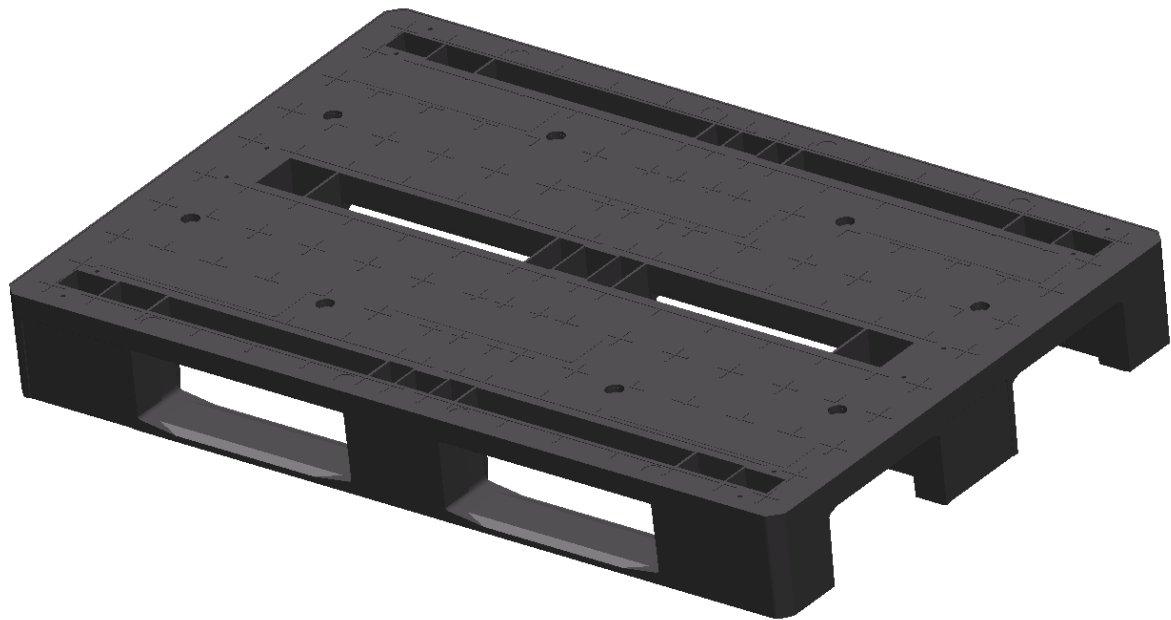
Dimensions:	1200x800x146 mm
Weight:	20 kg
Static Load:	2 750 kg
Dynamic Load:	1 000 kg
Shelf Load:	500 kg
Material:	100 % Recycled plastic
Temperature:	-20/+40
Shelvable:	Yes
Color	Grey / Black
Co2 Saving:	ca 60 kg

Environmental-Reinforced Full Pallet

Dimensions:	1200x800x146 mm
Weight:	22 kg
Static Load:	3 000 kg
Dynamic Load:	1 200 kg
Shelf Load:	1 000 kg
Material:	100 % Reinforced recycled plastic
Temperature:	-20/+40
Shelvable:	Yes
Steel	Yes
Color	Grey / Black
Co2 Saving:	ca 60 kg

Anti-slip can be selected on the surface, underneath and under the runners.

Our pallets have been tested in their essential parts according to ISO 8611 standard.



Contact:
Anne-Lie Kroon
annelie@impossibleplastics.com
073 517 24 29